

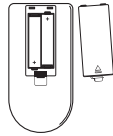
# CHANGING REMOTE BATTERIES

**Step 1.** Flip the remote over so that the bottom is facing up.

**Step 2.** Push the tab at the top of the battery compartment door backwards and lift to remove to expose the remote's battery compartment.

**Step 3.** Replace batteries with 2 new AAA batteries.

**Step 4.** Replace battery compartment door by aligning the two prongs on the bottom of the battery compartment door with the guides on the bottom of the remote and press the battery compartment door down so that it clicks back into place. The remote is now ready for use.



For best results, use type AAA Alkaline batteries.

Install only new batteries of the same type in your product.

Failure to insert batteries in the correct polarity, as indicated in the battery compartment, may shorten the life of the batteries or cause batteries to leak.

Do not mix old and new batteries.

Do not mix Alkaline, Standard (Carbon-Zinc) or Rechargeable (Nickel Cadmium) or (Nickel Metal Hydride) batteries.

Danger of explosion if battery is incorrectly replaced.

Batteries should be recycled or disposed of as per state and local guidelines.

# REMOTE STATEMENT

This remote controller complies with Part 15 of the FCC Rules. Operation is subject to the following two conditions: (1) This device may not cause harmful interference, and (2) this device must accept any interference received, including interference that may cause undesired operation. NOTE: This remote controller has been tested and found to comply with the limits for a Class B digital device, pursuant to Part 15 of the FCC Rules. These limits are designed to provide reasonable protection against harmful interference in a residential installation. This equipment generates, uses and can radiate radio frequency energy and, if not installed and used in accordance with the instructions, may cause harmful interference to radio communications. However, there is no guarantee that interference will not occur in a particular installation. If this equipment does cause harmful interference to radio or television reception, which can be determined by turning the equipment off and on, the user is encouraged to try to correct the interference by one or more of the following measures:

- Reorient or relocate the receiving antenna.
- Increase the separation between the equipment and receiver.
- Connect the equipment into an outlet on a circuit different from that to which the receiver is connected.
- Consult the dealer or an experienced radio/TV technician for help.

# WARRANTY

This fan/heater combo includes a one (1) year warranty, which covers manufacturer defects and workmanship under normal use. Warranty is offered only to the original purchaser. Proof of purchase is required to utilize the warranty. Proof of purchase constitutes a dated sales receipt. This warranty is void if the unit(s) have been resold and/or subjected to abuse, including, without limitation, being dropped (which could result in damage to the fan cabinets, motors, fan controls, etc.), immersion in or exposure to water, exposure to excessive heat, outdoor usage, any use other than normal household use for which this fan/heater combo was intended, disassembly, repair or alteration by anyone other than an authorized service provider, use on improper voltage or current, or any use contrary to the user instructions. Batteries and battery life are not covered in this warranty. No other warranties are expressed or implied. To receive coverage under this warranty, contact customer service for consultation and/or replacement. DO NOT attempt to repair any electrical or mechanical functions of this product; doing so will void this warranty and could lead to injury. Please do not return to store unless you have been unable to successfully resolve any potential warranty or trouble shooting issues.

**WARRANTY ACTIVATION:** To activate the warranty for this product please visit:  
<https://www.blackstoneinternational.ltd/product-registration>

# CUSTOMER SERVICE

**HAVE A PROBLEM? DO NOT RETURN TO PLACE OF PURCHASE. PLEASE CONTACT CUSTOMER SERVICE.**

Should you have any questions or comments please contact us at: [customerservice@blackstoneltd.com](mailto:customerservice@blackstoneltd.com)

1-888-525-7969

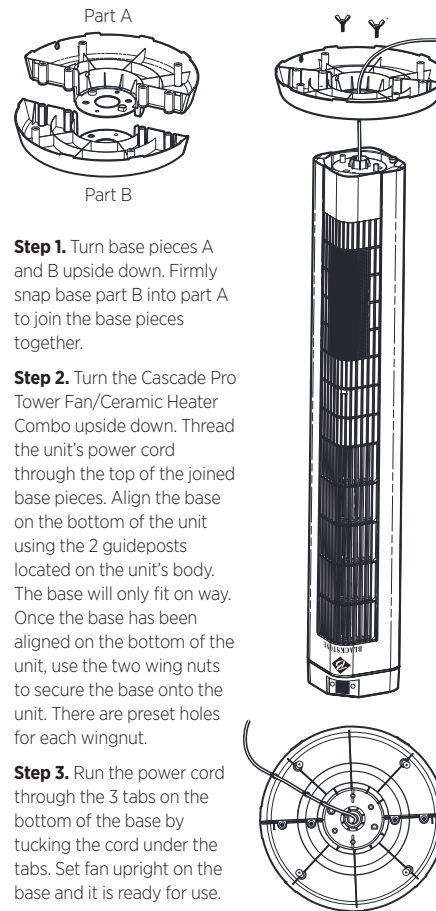
Distributed by: Blackstone International, Ltd. 2018 Lord Baltimore Dr. Windsor Mill, MD 21244  
[customerservice@blackstoneltd.com](mailto:customerservice@blackstoneltd.com) | 1-888-525-7969 | [www.blackstoneinternational.ltd](http://www.blackstoneinternational.ltd)



BLACKSTONE.

# CASCADE PRO FAN & CERAMIC HEATER COMBO

## BASE ASSEMBLY



**Step 1.** Turn base pieces A and B upside down. Firmly snap base part B into part A to join the base pieces together.

**Step 2.** Turn the Cascade Pro Tower Fan/Ceramic Heater Combo upside down. Thread the unit's power cord through the top of the joined base pieces. Align the base on the bottom of the unit using the 2 guideposts located on the unit's body. The base will only fit on way. Once the base has been aligned on the bottom of the unit, use the two wing nuts to secure the base onto the unit. There are preset holes for each wingnut.

**Step 3.** Run the power cord through the 3 tabs on the bottom of the base by tucking the cord under the tabs. Set fan upright on the base and it is ready for use.

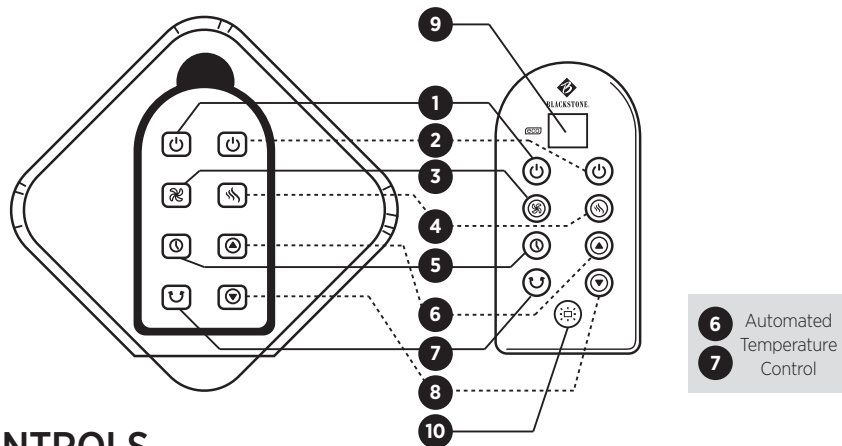
MODEL # TFH-2020



## ELECTRICAL SPECS

**Ceramic Heater Output: Unit:**  
H3: 4265 btu                      120V, 60Hz, 10.5a  
H2: 3583 btu  
H1: 2388 btu

**PLEASE READ, UNDERSTAND AND FOLLOW BEFORE USING  
SAVE THESE INSTRUCTIONS | FOR HOUSEHOLD USE ONLY**



## CONTROLS

### 1 Tower Fan ON/OFF Control

**a.** Press once to turn the tower fan ON. Unit will beep once to indicate that the tower fan is now powered ON. Tower fan will start on its lowest F1 speed (see below).

**b.** Press and hold the power button to turn the tower fan OFF. The unit will beep once to indicate that the tower fan is powering OFF.

### 2 Heater ON/OFF Control

**a.** Press once to turn the heater fan ON. Unit will beep once to indicate that the ceramic heater is now powered ON. Heater will start on its lowest H1 speed (see below).

**b.** Press and hold the button to turn the heater OFF. The unit will beep once to indicate that the ceramic heater is powering OFF.

### 3 Tower Fan Speed Control

**a.** After turning the tower fan ON using button 1, press the tower fan speed button to increase the speed from F1-F4 (F1, F2, F3, F4). If the speed button is pressed when the tower fan is already running at speed F4, it will reset the speed to F1.

**b.** Fan Speeds: F1 • F2 • F3 • F4  
**Slower** → **Faster**

### 4 Heater Fan Speed Control

**a.** After turning the heater fan ON using button 2, press the tower fan speed button to increase the speed from H1-HF (H1, H2, H3, HF). If the speed button is pressed when the tower fan is already running at speed HF, it will reset the speed to H1. The HF setting turns the fan to the F1 setting and the heater to the H3 setting and they run simultaneously.

**b.** Heater Speeds: H1 • H2 • H3 • HF  
**Slower** → **Faster**

### 5 Timer

**a.** Timer can be used for either the tower fan or heater. The unit will shut OFF after the timed interval has completed. Press button repeatedly to select the desired hour count down.

**b.** Hour settings 1-15 hours. The remote screen and the screen on the front of the unit will indicate the number of countdown hours. Pressing the timer button consecutively will increase the number of hours until it reaches 15 after which pressing the time button will reset the timer back to 0 hours.

**c.** The automated temperature is used only for the heater. Fahrenheit temperatures from 39-90 degrees can be chosen and the unit will automatically utilize the ceramic heater to maintain the chosen ambient temperature. Temperatures will be displayed on the remote screen and the screen on the front of the unit.

**6 Temperature Up:** increases the ambient Fahrenheit temperature – highest setting is 90 degrees Fahrenheit. The remote screen and the screen on the front of the unit will display the Fahrenheit selection when automated temperature control is being utilized.

**7 Temperature Down:** decreases the ambient Fahrenheit temperature – lowest setting is 39 degrees Fahrenheit. The remote screen and the screen on the front of the unit will display the Fahrenheit selection when automated temperature control is being utilized.

**8 Oscillation:** press for ON/OFF – when ON, the unit will oscillate from side to side. Can be used for either the tower fan function or heater function.

**9 Remote Display:** shows whether tower fan or heater is selected, fan speeds, timer hours, and Fahrenheit temperature selection.

**10 Light Control:** will turn the unit lights ON/OFF. Only the remote can turn the unit lights ON/OFF.

## TROUBLESHOOTING

### Reset Unit:

Unplug the unit and allow it to cool for 15 minutes. After cooling, plug the unit back in the resume operation.

### If Unit Shuts Off Unexpectedly:

Be sure that the timer function was not turned ON. If timer was used, the unit will automatically shut off after the selected hour runtime concludes.

Unit may have shut off because the selected ambient Fahrenheit temperature was achieved. Unit will turn back on again if the ambient temperature drops below the selected Fahrenheit temperature. Unit screen will still be illuminated if unit is on automated temperature control mode unless the lights have been turned off by the remote. To check if unit has turned off and needs to be reset, press any button on the control panel, if the unit beeps, it does not need to be reset.

Unit may have overheated and utilized the thermal protection automatic shut off. Reset the unit using the instructions above to reset the thermal protection automatic shutoff and begin operation again.

If unit continues to shut off after a few minutes of operation, this may indicate that the heater intake needs to be cleaned. Follow cleaning instructions listed in this manual.

### If Remote Will Not Operate Unit:

The remote communicates with unit using infra-red light. Be sure that the remote is aimed directly at the top of the front of the unit and that there is nothing impeding the line of sight between the remote and the unit.

Replace remote batteries with 2 new AAA batteries.

## CLEANING

To clean, first unplug the unit and allow the heater to cool off before cleaning.

Once the unit has been unplugged and the heater has cooled off, wipe the exterior vents with a soft cloth.

Clean the heater intake with a vacuum with a brush head attachment.

Do not use flammable sprays or liquids to clean.

## REMOTE

The remote utilizes two AAA batteries which are included. Use only two batteries of the same type.

Do not combine new and used batteries to operate the remote.

Never dispose of batteries in fire, batteries may explode or leak.

## WARNINGS

### Safety:

Use only with 120V electrical outlets.

Do not plug into extension cords, power strips, or surge protectors or multioutlet extensions of any type.

Unit includes tip over protection – this protection will shut the unit off if it tips over to reduce the risk of fire. If unit shuts off due to tip over, unplug the unit and stand it upright, allow to cool for 15 minutes, and plug it back into a 120V wall outlet to reset the unit and begin operation again.

Unit is equipped with thermal overload protection. If the unit overheats, it will automatically turn off to reduce the risk of fire.

A thermal overload protector is installed in this unit to prevent overheating.

Unplug the unit before cleaning and moving.

Never leave the unit unattended when the ceramic heater is operating.

Place the unit on a hard, level surface when operating. Do not operate the unit on soft or uneven surfaces.

Do not attempt to take the unit apart.

Do not block or tamper with the unit when it is turned on. When operating, be sure there are no objects surrounding the unit that could block or restrict the intakes and vents.

Store in a dry place away from excessive heat and direct sunlight.

This unit is designed to operate in dry environments only. Do not immerse the unit in water or operate in a damp environment (examples: laundry rooms and bathrooms) or near water.

For indoor use only.

Do not operate the unit near flammable items or in environments where flammable fumes may be present.

Do not block the air intakes or exhaust vents.

Do not kink the power cord when storing or while in use.

Do not use this product with any solid-state speed control and do not insert a finger or any object into the vents.

Do not run the power cord under carpets or rugs.